

**Z196.720===**

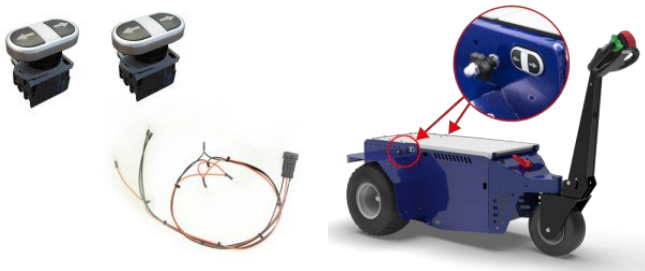
## Accessories

**DP196.15000**

Price difference for tow capacity increase

**E800.704===**

Steering speed reduction kit

**E800.706===**

Forward/reverse side switches

**ZGO500.720===**

Hitch with hydraulic lifting system

Z169.789===



Configuration kit for hydraulic hitch

ZG40.003.800



Mounting plate for hitches

ZG40.005.700===



Drop pin hitch Ø20 mm

ZG40.008.700===



Drop pin hitch Ø35 mm

A199.706



Drop pin hitch Ø40 mm

ZG60.003.721===



Ball/pin hitch Ø20-25

A199.707



Tow ball pin coupling

A161.700===



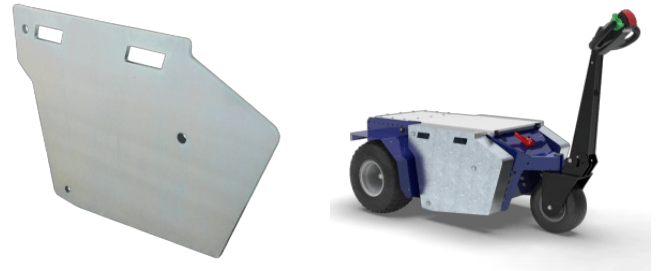
Pushing block

T528.700



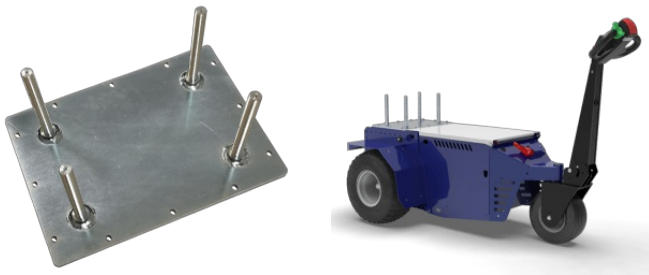
Ballasts fitting kit

Z196.850



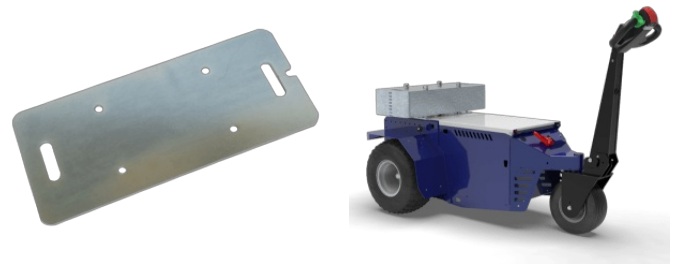
MAX 20 pcs. - 22 kg side ballast

Z169.852



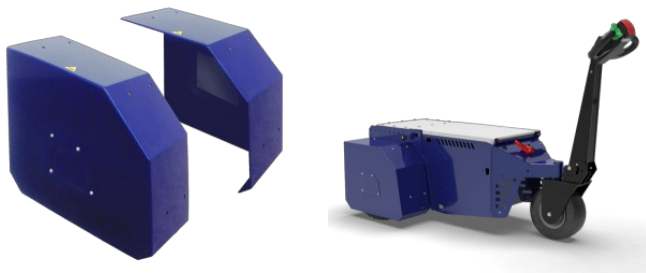
Fitting kit for back ballasts

Z169.851



MAX 16 pcs. - 17 kg back ballast

Z196.707===



Traction wheels guard

E204.700===



Digital hour meter

E550.750===



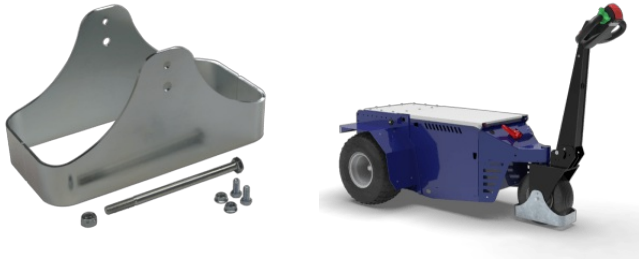
Emergency stop

E506.750===



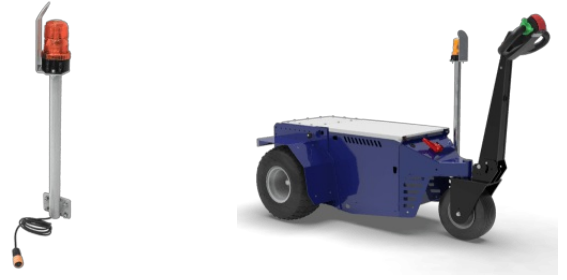
Key Pad on/off

Z323.710===



Guard for direction wheel

Z099.719===



Pole mounted flashing beacon